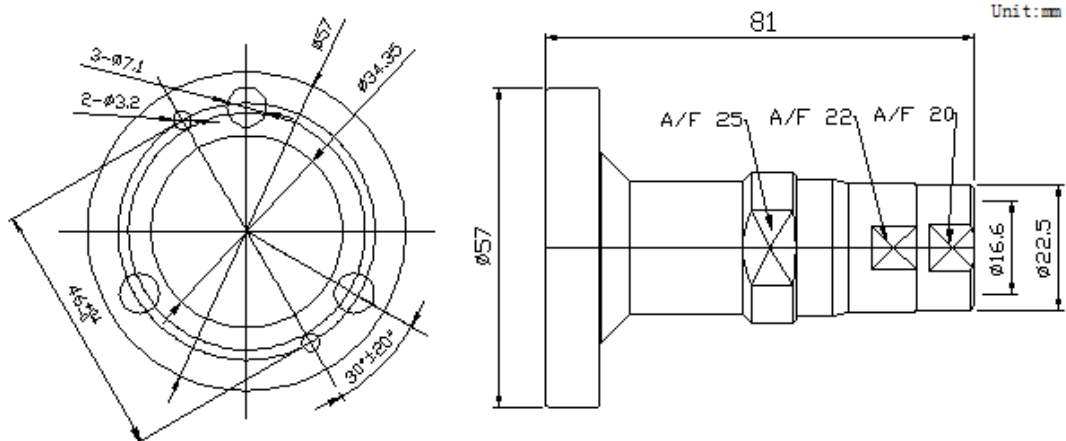


7/8" EIA (Flange) Connector For 1/2" Feeder (Flexible) Cable (7/8EIA-J1/2)

(Contact attachment: Inner: captivated; Outer: clamp)



Interface

According to

IEC 60339-2

Electrical

Characteristic Impedance

50 ohm

Operating Frequency Range

DC-5GHz

VSWR

1.07@DC-1000MHz; ≤ 1.20 @DC-2500MHz

Dielectric Withstanding Voltage

≥ 6000 V RMS, 50Hz, at sea level

Working Voltage

≤ 2100 V RMS, 50Hz, at sea level

Dielectric Resistance

≥ 5000 M Ω

Average Power

2.3KW@900MHz

Peak Power Maximum

90KW

Contact Resistance

Center Contact ≤ 1.5 m Ω

Outer Contact ≤ 1.5 m Ω

Mechanical

Durability

Mating cycles ≥ 100

Material and plating

	Material	Plating
Body	Brass	Ni
Insulator	PTFE	—
Center conductor	Brass/Phosphor bronz	Ag
Coupling flange	Brass	Ni
Back nut	Brass	Ni
Shield clamp	Brass	Ni
Gasket	Silicone rubber	—
Hardware kits	Stainless steel	—

Environmental

Temperature Range

-45°C ~ +85°C

Protection Rate

IP 67

RoHS

Compliant

Notes: Suited Cable: Commscope LDF4-50A, RFS LCF12-50, Hansen 1/2", Leno 1/2"R, Eupen EC4-50

One coupling element (bullet) is available; Hardware kits include: 3 pieces of each bolt, nut, lock washer and flat washer.