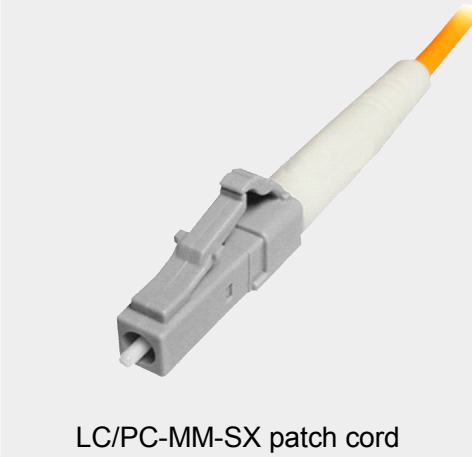


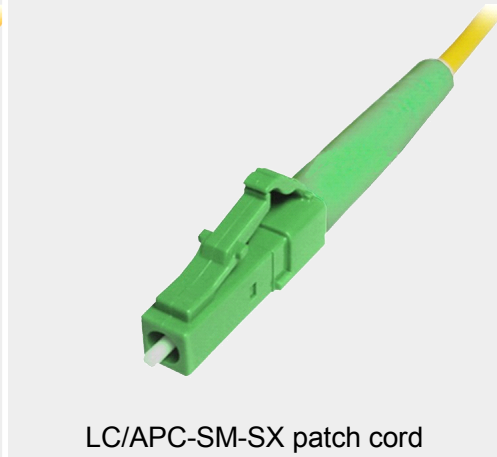
LC Patch Cord Series



LC/PC-SM-SX patch cord



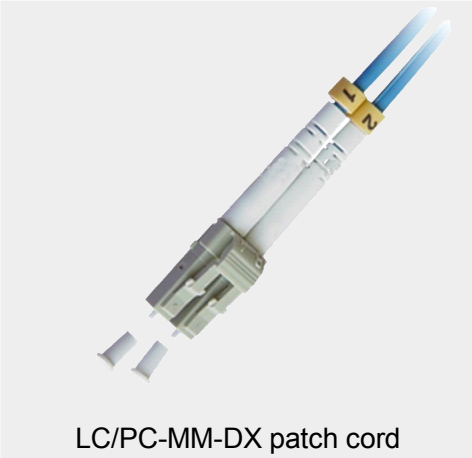
LC/PC-MM-SX patch cord



LC/APC-SM-SX patch cord



LC/PC-SM-DX patch cord



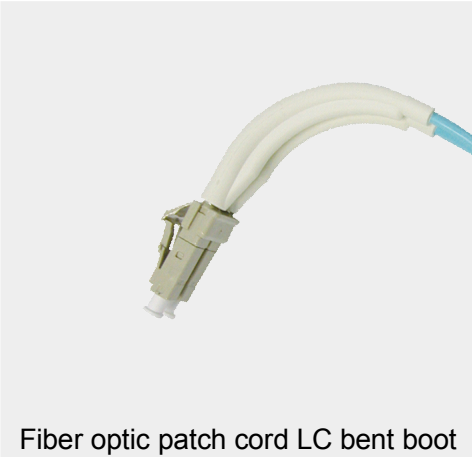
LC/PC-MM-DX patch cord



LC/ST-MM-DX patch cord



LC/PC-SM-SX look back patch cord



Fiber optic patch cord LC bent boot



LC-LC patch cord



LC-SC patch cord



LC-FC patch cord



LC-ST patch cord

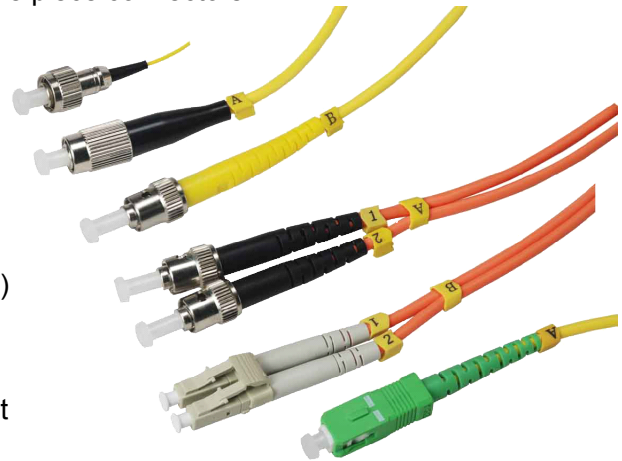
LC Patch Cord Series

DESCRIPTION

The LC fiber cable is with a small form factor (SFF) connector and is ideal for high density applications. The LC fiber patch connector has a zirconia ceramic ferrule measuring 1.25mm O.D. with either a PC or APC end face, and provides optimum insertion and return loss. The LC fiber patch cable connector is used on small diameter mini-cordage (1.6mm/2.0mm) as well as 3.0mm cable. LC fiber cable connectors are available in cable assembled or one piece connectors.

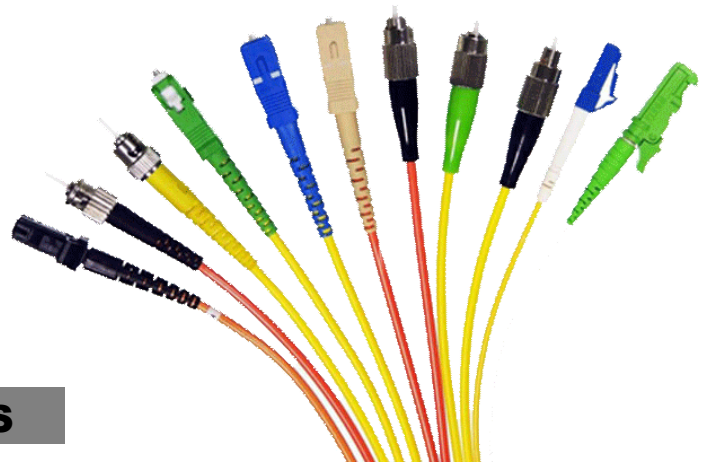
FEATURES

- Compact, pull-proof design
- RJ-45 style interface
- Low insertion loss and low back reflection
- Polarized and color coded (TIA 568-A & ISO 11801)
- UL-Rated plastic housing and boot
- High precision alignment
- Behind the Wall (BTW) style short connector & boot



APPLICATION

- Gigabit Ethernet
- Active Device Termination
- Premise Installations
- Telecommunication Networks
- Multimedia

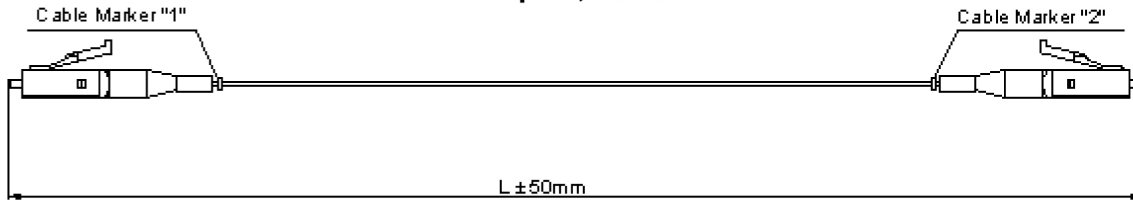


TECHINCAL SPECIFICATIONS

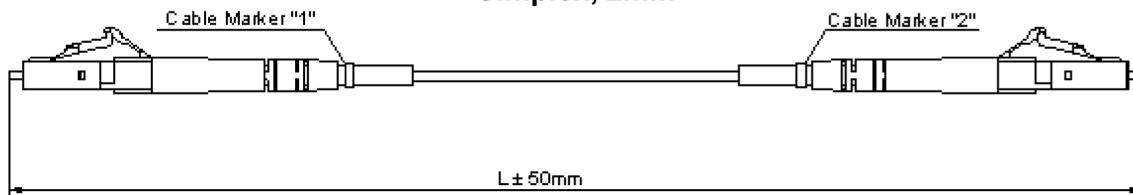
Descriptions	SM(PC)	SM(UPC)	SM(APC)	MM(PC)
Insertion loss	<0.3dB	≤0.2dB	<0.3dB	<0.3dB
Return loss	≥50dB	≥50dB	≥65dB	≥35dB
Repeatability	≤0.1	≤0.1	≤0.1	≤0.1
Durability	<0.1dB typical change, 1000 mating			
Interchangeability	≤0.2dB			
Vibration	≤0.2dB			
Operating Temperature	- 20°C ~ + 70°C			
Storage Temperature	- 40°C ~ + 80°C			
Cable Diameter	3.0mm, 2.0mm, 0.9mm			

LC Patch Cord Series

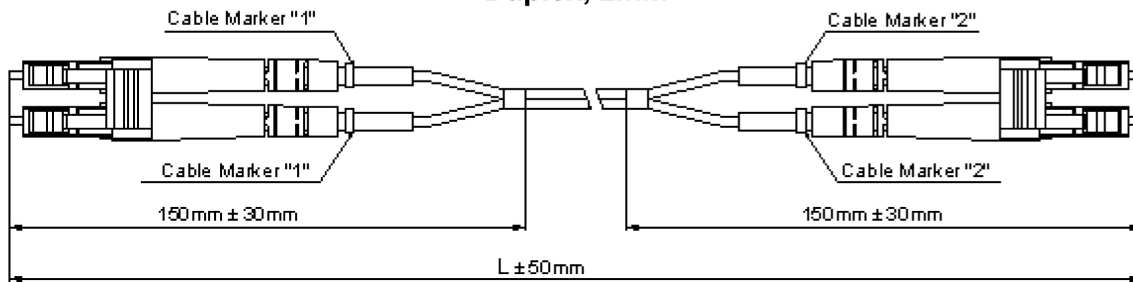
Simplex, 900um



Simplex, 2mm



Duplex, 2mm



ORDER INFORMATION

XXX	—	LC	/	PC	—	LC	/	PC	/	SM	—	SX	/	2.0	—	3M
0		1		2		3		2		4		5		6		7
0	Brand name															
1	Connector#1 LC,SC,FC,ST,E2000,DIN,D4,MU,MTRJ,etc.															
2	Lapping Way PC&APC (For MTRJ, F=Female, M=Male)															
3	Connector#2 LC,SC,FC,ST,E2000,DIN,D4,MU,MTRJ,Pigtail,etc.															
4	Cable Type SM(9/125μm) ,MM(50/125μm & 62.5/125μm)															
5	Fiber Number SX(Simplex) or DX(Duplex)															
6	Cable Diameter 2.0=Ø2.0mm, 3.0=Ø3.0mm, 0.9=Ø0.9mm, etc.															
7	Cable Length 3m(Length in meter)															