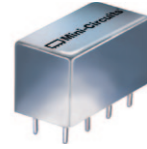


Plug-In Frequency Mixer

SRA-3H+

Level 17 (LO Power +17 dBm) 0.05 to 200 MHz



CASE STYLE: A01

Maximum Ratings

Operating Temperature	-55°C to 100°C
Storage Temperature	-55°C to 100°C
RF Power	200mW
IF Current	40mA
Permanent damage may occur if any of these limits are exceeded.	

Pin Connections

LO	8
RF	1
IF	3,4 [^]
GROUND	2,5,6,7
CASE GROUND	2

[^] pins must be connected together externally

Features

- excellent conversion loss, 5.18 dB typ.
- high L-R isolation, 40 dB typ. L-I isolation, 40 dB typ.
- rugged welded construction
- hermetic

Applications

- VHF/UHF
- FM broadcast radio
- maritime communications
- defense & federal communications

+RoHS Compliant
The +Suffix identifies RoHS Compliance. See our web site for RoHS Compliance methodologies and qualifications

Electrical Specifications

FREQUENCY (MHz)		CONVERSION LOSS (dB)				LO-RF ISOLATION (dB)						LO-IF ISOLATION (dB)					
LO/RF f_L - f_U	IF	Mid-Band m		Total Range Max.	Total Range Max.	L		M		U		L		M		U	
		\bar{X}	σ			Typ.	Min.	Typ.	Min.	Typ.	Min.	Typ.	Min.	Typ.	Min.	Typ.	Min.
0.05-200	DC-200	5.18	.05	7.0	7.5	50	45	40	30	35	25	45	35	40	30	30	20

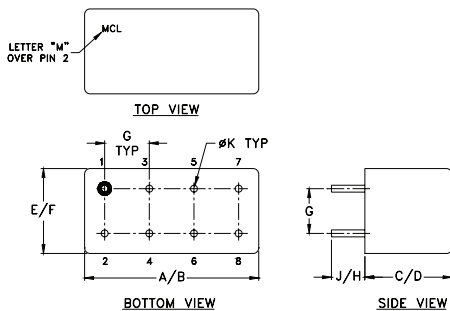
1 dB COMP.: +10 dBm typ.

L = low range [f_L to $10 f_L$]
m = mid band [$2 f_L$ to $f_U/2$]

M = mid range [$10 f_L$ to $f_U/2$]

U = upper range [$f_U/2$ to f_U]

Outline Drawing



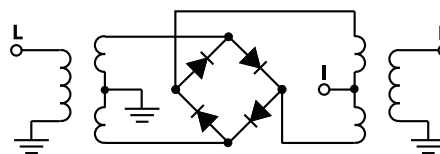
Outline Dimensions (inch/mm)

A	B	C	D	E	F
.770	.800	.385	.400	.370	.400
19.56	20.32	9.78	10.16	9.40	10.16
G	H	J	K		wt
.200	.20	.14	.031		grams
5.08	5.08	3.56	0.79		5.2

Typical Performance Data

Frequency (MHz)		Conversion Loss (dB)	Isolation L-R (dB)	Isolation L-I (dB)	VSWR RF Port (:1)	VSWR LO Port (:1)
RF	LO	LO +17dBm	LO +17dBm	LO +17dBm	LO +17dBm	LO +17dBm
0.05	30.05	5.79	61.52	58.47	1.22	2.35
0.20	30.20	5.33	61.30	55.83	1.23	2.27
1.00	31.00	5.25	61.00	55.41	1.22	2.14
5.00	35.00	5.18	58.85	54.15	1.21	2.17
10.00	40.00	5.36	54.85	51.92	1.20	2.19
20.00	50.00	5.40	48.89	47.33	1.20	2.19
41.42	71.42	5.37	41.07	40.89	1.19	2.18
50.00	80.00	5.37	39.79	39.78	1.18	2.27
69.00	99.00	5.34	39.34	38.19	1.15	2.20
89.68	59.68	5.33	38.45	35.45	1.15	2.21
103.47	73.37	5.34	36.25	36.39	1.13	2.14
110.37	80.37	5.37	35.73	35.84	1.13	2.07
117.26	87.26	5.38	35.17	35.59	1.11	2.12
131.05	101.05	5.40	34.48	35.04	1.10	2.15
137.95	107.95	5.42	33.95	34.10	1.10	2.24
151.74	121.74	5.50	32.91	31.97	1.11	2.21
165.53	135.53	5.66	31.97	30.09	1.12	2.17
179.31	149.31	5.76	31.41	28.67	1.14	2.13
193.10	163.10	5.77	31.62	28.17	1.17	2.20
200.00	170.00	5.75	32.02	28.21	1.19	2.23

Electrical Schematic



For detailed performance specs & shopping online see web site

P.O. Box 350166, Brooklyn, New York 11235-0003 (718) 934-4500 Fax (718) 332-4661 The Design Engineers Search Engine www.minicircuits.com Provides ACTUAL Data Instantly at [minicircuits.com](http://www.minicircuits.com)

IF/RF MICROWAVE COMPONENTS

Notes: 1. Performance and quality attributes and conditions not expressly stated in this specification sheet are intended to be excluded and do not form a part of this specification sheet. 2. Electrical specifications and performance data contained herein are based on Mini-Circuit's applicable established test performance criteria and measurement instructions. 3. The parts covered by this specification sheet are subject to Mini-Circuit's standard limited warranty and terms and conditions (collectively, "Standard Terms"); Purchasers of this part are entitled to the rights and benefits contained therein. For a full statement of the Standard Terms and the exclusive rights and remedies thereunder, please visit Mini-Circuit's website at www.minicircuits.com/MCLStore/terms.jsp.

REV. A
M98898
SRA-3H
DJ/TD/CP/AM
130502
Page 1 of 2

