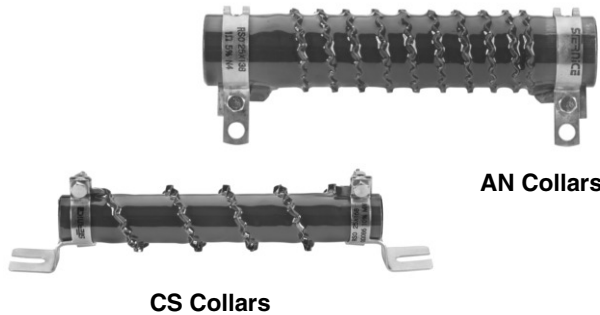


Fixed Wirewound Enamelled Corrugated Tape Resistors Very High Dissipation

FEATURES

- 160 W to 1 kW at 25 °C



AN Collars

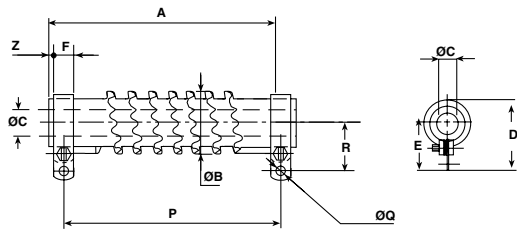
CS Collars

The remarkable dissipation power of this series is the result of an original winding method using corrugated edge-wound tape, thus forming a very active radiator. The enamelling follows the contour of the resistive element and provides effective insulation and support for the winding.

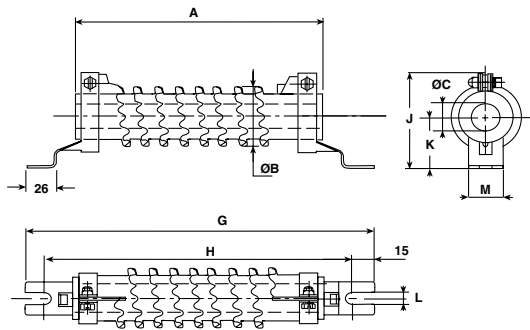
The tubular core is of special ceramic, capable of withstanding high thermal shock and overload of short duration.

DIMENSIONS

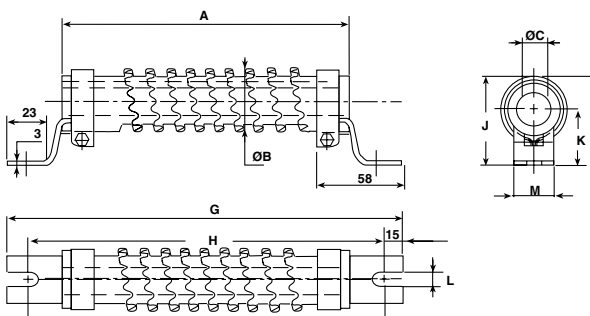
SCREWED STAINLESS STEEL 304 L "AN" TYPE 1



SCREWED STAINLESS STEEL 304 L "CS" TYPE 1



SCREWED STAINLESS STEEL 304 L "CS" TYPE 2



DIMENSIONS in millimeters						
RSO STYLE	25 x 138	25 x 168	30 x 250	40 x 370	50 x 373	
Connections	AN type 1	AN type 1	AN type 1	AN type 2	AN type 2	
	CS type 1	CS type 1	CS type 1	CS type 2	CS type 2	
A ± 2	138	168	250	370	373	
Ø B max.	39	39	44	54.5	65	
Ø C min.	12.6	12.6	17.4	22.3	27.1	
D max.	54	54	62	85.8	97	
E	33.5 ± 1	33.5 ± 1	36 ± 1	57 ± 1.5	63 ± 1.5	
F + 0.5 + 0	9	9	13	18	18	
Z	6	6	5	10	11.5	
G - 4 - 0	199	229	317	432	432	
H - 4 - 0	169	199	287	405	405	
J	50 ± 1.5	50 ± 1.5	60 ± 1.5	73.8	79	
K	27 ± 1	27 ± 1	30 ± 1	45 ± 1.5	45 ± 1.5	
L ± 0.5	6.5	6.5	9	9	9	
M ± 0.5	24	24	25	30	30	
P	117 ± 2	147 ± 2	227 ± 2.5	332 ± 3	332 ± 3	
Q	5.7	5.7	5.7	9.2	9.2	
R	28.5 ± 1	28.5 ± 1	31 ± 1	45 ± 1.5	51 ± 1.5	
Average weight in g	AN	160	190	350	960	1375
	CS	205	235	400	1040	1455

**MECHANICAL SPECIFICATIONS**

Mechanical Protection	enamel
Resistive Element	Ni-Cr wire
Connections	AN CS supporting collars
Average Unit Weight	160 to 1455 g

ENVIRONMENTAL SPECIFICATIONS

Temperature Limits	- 55 °C + 450 °C
Climatic Category	- 55 °C/+ 200 °C/56 days

ELECTRICAL SPECIFICATIONS

Resistance Range	0.068 Ω to 68 MΩ (E12 preferred series)
Standard Resistance Tolerance	Rn ≥ 1 Ω ± 5 % Rn < 1 Ω ± 10 %
Power Rating	160 W to 1 kW at 25 °C
Temperature Coefficient	180 ppm/°C Typical

PERFORMANCE

TESTS	CONDITIONS	REQUIREMENTS	TYPICAL VALUES AND DRIFTS
Short Time Overload	10 Pr during 5 s	2 % or 0.05 Ω	1 %
Thermal Shock	Load at Pr followed by cold temp. exposure at - 55 °C/15 sec	2 % or 0.05 Ω	1 %
Climatic Sequence	Phase A: + 200° Phase C: - 55° Phase D: 5 cycles	3 % or 0.05 Ω	1 %
Load Life	90/30' cycle 1000 h at Pr 25 °C	5 %	2 %

SPECIAL FEATURES

RSO STYLE	25 x 138	25 x 168	30 x 250	40 x 370	50 x 373
Power Rating at 25 °C	160 W	200 W	350 W	700 W	1000 W
Resistance Ohmic Range (E12 Series)	0.068 Ω 12 Ω	0.10 Ω 18 Ω	0.22 Ω 33 Ω	0.33 Ω 56 Ω	0.39 Ω 68 Ω

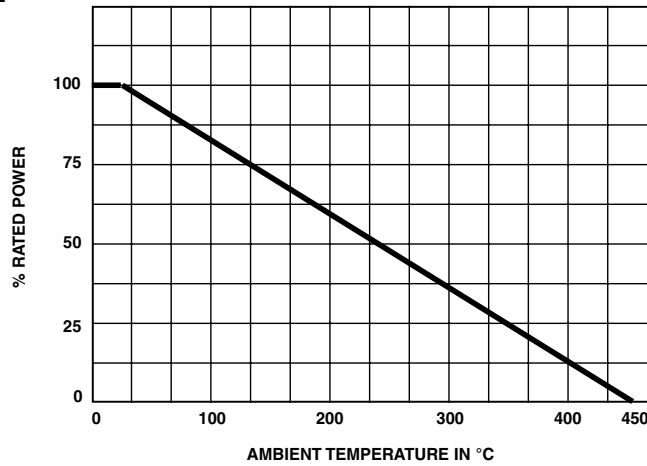
RECOMMENDATIONS FOR USE**OVERLOAD:**

The RSO resistors are capable of withstanding overloads of about 10 Pr for a maximum period of 5 seconds; they can resist momentarily even greater overloads.

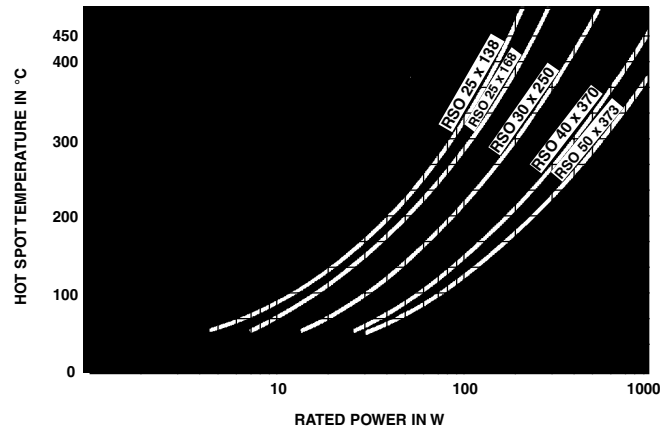
Particular requirements should be submitted to Vishay Sfernice.



POWER RATING CHART



TEMPERATURE RISE



PACKAGING

Box: fixed quality depending on size and collars

MARKING

SFERNICE trademark, model, style, nominal resistance (in Ω), tolerance (in %), manufacturing date.

ORDERING INFORMATION							
RSO	25 x 168	XXX	CS	U82	± 10 %	B02NA	e
MODEL	STYLE	SPECIAL DESIGN	CONNECTIONS	OHMIC VALUE	TOLERANCE	PACKAGING	LEAD (Pb)-FREE
		Method N° Optional		Custom items are subject to extra-charge and min. order. Please see price list.			

SAP PART NUMBERING GUIDELINES					
RSO	25168	C	R820	K	N
MODEL	STYLE	CONNECTIONS	OHMIC VALUE	TOLERANCE	PACKAGING



Notice

Specifications of the products displayed herein are subject to change without notice. Vishay Intertechnology, Inc., or anyone on its behalf, assumes no responsibility or liability for any errors or inaccuracies.

Information contained herein is intended to provide a product description only. No license, express or implied, by estoppel or otherwise, to any intellectual property rights is granted by this document. Except as provided in Vishay's terms and conditions of sale for such products, Vishay assumes no liability whatsoever, and disclaims any express or implied warranty, relating to sale and/or use of Vishay products including liability or warranties relating to fitness for a particular purpose, merchantability, or infringement of any patent, copyright, or other intellectual property right.

The products shown herein are not designed for use in medical, life-saving, or life-sustaining applications. Customers using or selling these products for use in such applications do so at their own risk and agree to fully indemnify Vishay for any damages resulting from such improper use or sale.