



ALL RIGHTS RESERVED. NO PORTION OF THIS PUBLICATION, WHETHER IN WHOLE OR IN PART CAN BE REPRODUCED WITHOUT THE EXPRESS WRITTEN CONSENT OF SPC TECHNOLOGY.

SPC-F005.DWG

REVISIONS

DOC. NO. SPC-F005 * Effective: 7/8/02 * DCP No: 1398

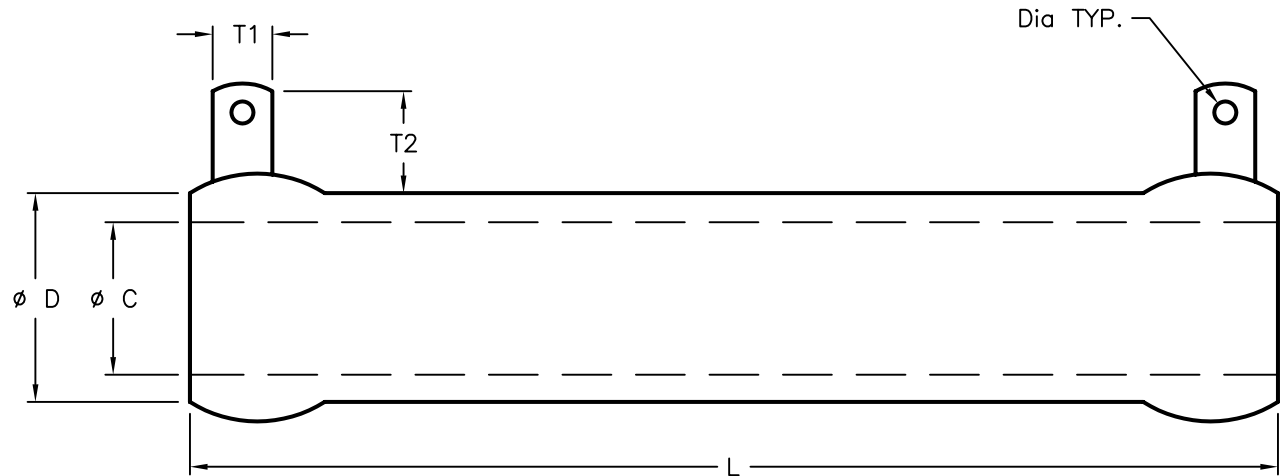
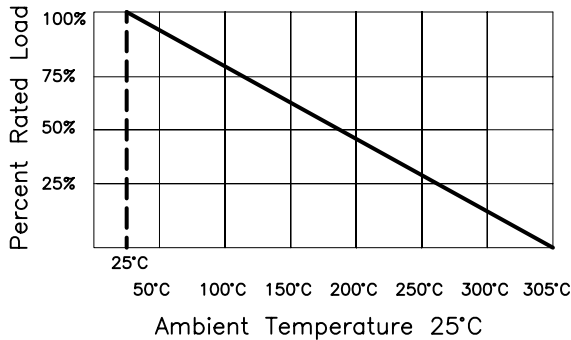
DCP #	REV	DESCRIPTION	DRAWN	DATE	CHECKD	DATE	APPRVD	DATE
1868	A	RELEASED	EYO	11/11/05	HO	11/14/05	JWM	11/17/05

Specifications:

- Material:
 - Coating: Lead free vitreous enamel.
 - Core: Tubular Ceramic
 - Terminals: solder-coated radial lug.
- Derating Linearly from 100% @ +25°C to 0% @ +350°C.
- Power Rating: Based on 25°C free air rating.
- Overload: 10 times rated wattage for 5 sec
- Temperature Coefficient: 1Ω to 20Ω: ±400 ppm/°C
Above 20Ω: ±260 ppm/°C
- Dielectric withstanding voltage (Measured from terminal to mounting bracket):
 - 25W, 50W, 100W: 1000 VCA
 - 225W: 3000 VCA



Wattage Derating Chart



DISCLAIMER:
ALL STATEMENTS AND TECHNICAL INFORMATION CONTAINED HEREIN ARE BASED UPON INFORMATION AND/OR TESTS WE BELIEVE TO BE ACCURATE AND RELIABLE. SINCE CONDITIONS OF USE ARE BEYOND OUR CONTROL, THE USER SHALL DETERMINE THE SUITABILITY OF THE PRODUCT FOR THE INTENDED USE AND ASSUME ALL RISK AND LIABILITY WHATSOEVER IN CONNECTION THEREWITH.

TOLERANCES:
UNLESS OTHERWISE SPECIFIED,
.XX ±0.125
.XXX ±0.062

DRAWN BY:	DATE:
EKLAS ODISH	11/11/05
CHECKED BY:	DATE:
HISHAM ODISH	11/14/05
APPROVED BY:	DATE:
JEFF MCVICKER	11/17/05

DRAWING TITLE: RoHS Compliant Wirewound Resistors, Fixed, Vitreous, 5%			
SIZE	DWG. NO.	ELECTRONIC FILE	REV
A	TA-681	TA-681.DWG	A
SCALE: NTS		U.O.M.: INCHES	SHEET: 1 OF 2

Multicomp P/N	Resistance Ω $\pm 5\%$	Wattage (W)	L	D	C	T1	T2	Dia	Mounting Bracket Type #
MC14658	5	25	2.000	0.563	0.313	0.250 ± 0.031	0.563 ± 0.031	0.166 ± 0.015	MC14689
MC14655	10								
MC14656	25								
MC14657	50								
MC14659	100								
MC14660	1000								
MC14661	1	50	4.000	0.563	0.313	0.250 ± 0.031	0.563 ± 0.031	0.166 ± 0.015	
MC14662	5								
MC14663	10								
MC14664	25								
MC14665	50								
MC14666	100								
MC14667	1000	100	6.500	0.750	0.500	0.250 ± 0.031	0.563 ± 0.031	0.166 ± 0.015	
MC14668	1								
MC14669	2								
MC14670	5								
MC14671	10								
MC14672	25								
MC14673	50								
MC14674	100								
MC14675	150								
MC14676	250								
MC14677	1	225	10.500	1.125	0.750	0.375 ± 0.031	0.625 ± 0.031	0.173 +0.015 -0.005	
MC14678	2								
MC14679	5								
MC14680	10								
MC14681	25								
MC14682	50								
MC14683	100								
MC14684	150								
MC14685	250								
MC14686	500								
MC14687	1000								
MC14688	100000								

ALL RIGHTS RESERVED. NO PORTION OF THIS PUBLICATION, WHETHER IN WHOLE OR IN PART CAN BE REPRODUCED WITHOUT THE EXPRESS WRITTEN CONSENT OF SPC TECHNOLOGY.

SIZE
A

DWG. NO.

TA-681

ELECTRONIC FILE

TA-681.DWG

REV

A