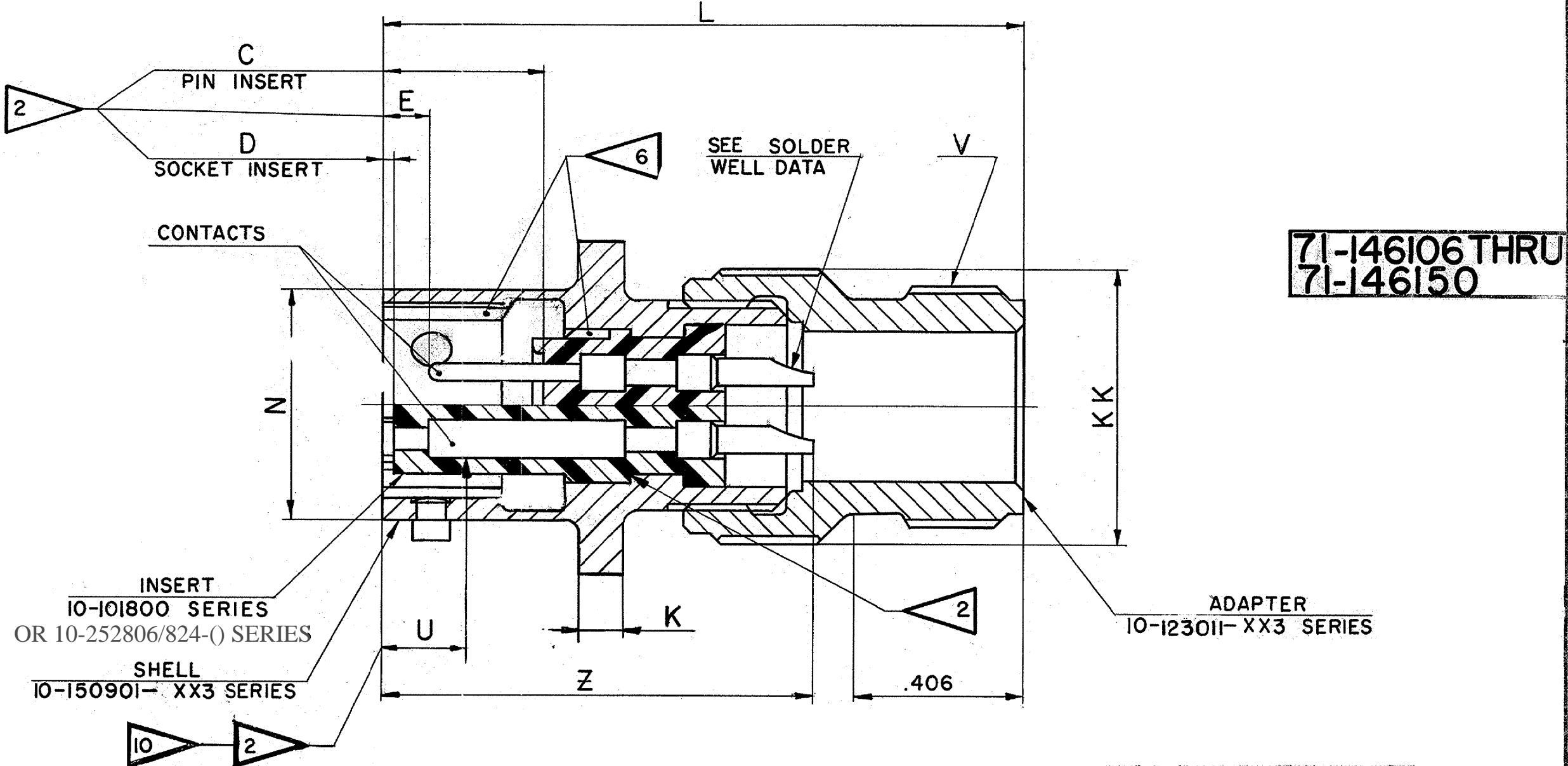
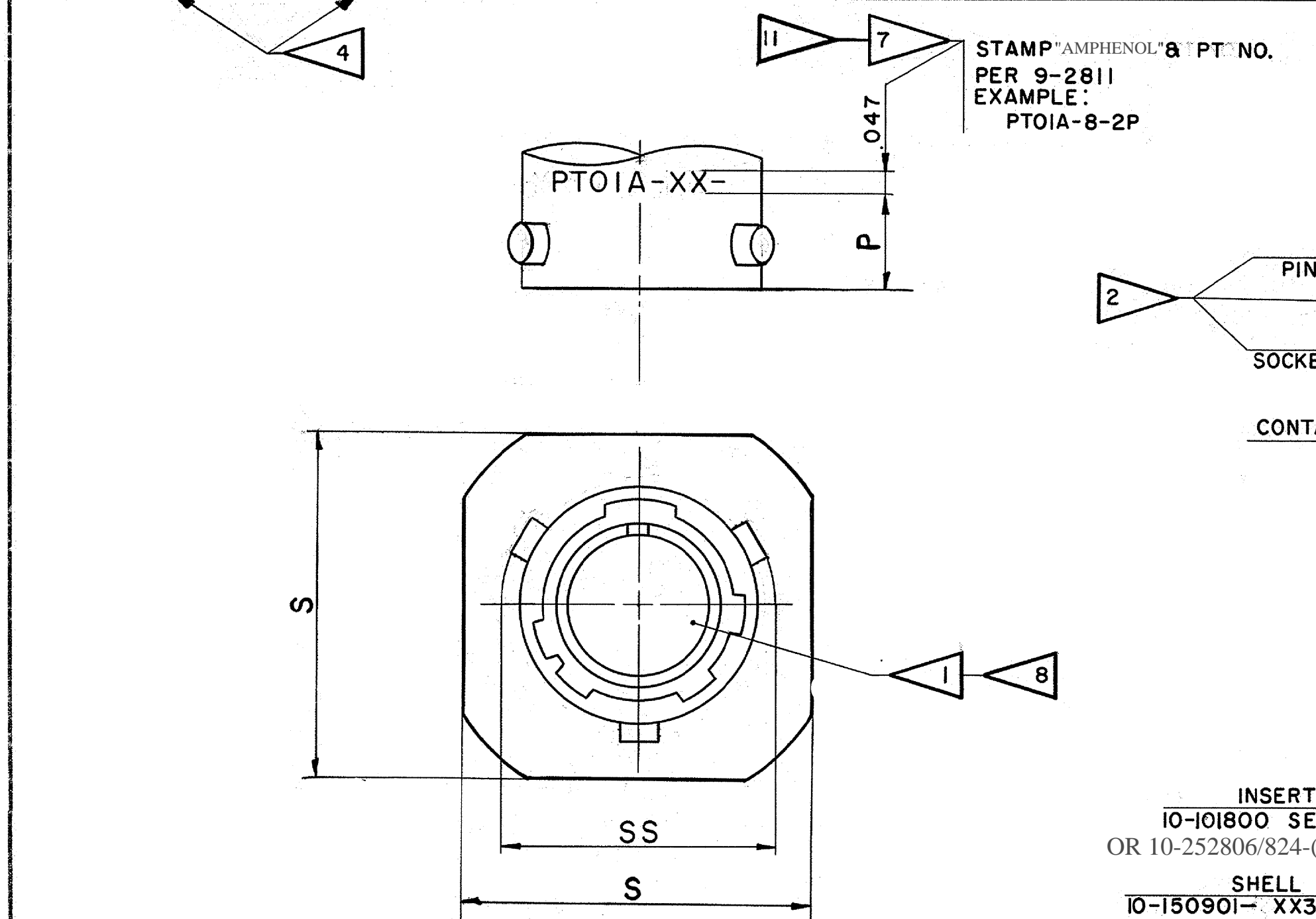


ASSEMBLY NUMBER	PT NUMBER	DIMENSIONS													
		C	D	E	L	N DIA	P	V THREAD (PLATED)		Z	KK	SS	K	S	U
		+0.10 -0.025	+0.10 -0.025	+0.10 -0.020	+0.040 -0.030	+0.001 -0.005		SIZE CLASS 2A	PITCH DIA	±.030	+0.000 -0.031	+0.000 -0.016		±.016	MAX
71-146106-	OIA-6-					.348	.188	.3750-32 NEF	.3547-.3503	.887	.453	.439	.094	.688	.153
71-146108-	-8-					.473		.5000-28 UNEF	.4768-.4720		.578	.563		.812	
71-146110-	-10-					.590		.6250-24 NEF	.5979-.5927		.703	.680		.938	
71-146112-	-12-					.750		.7500-20 UNEF	.7175-.7118		.828	.859		1.031	
71-146114-	-14-					.875		.8750-20 UNEF	.8425-.8368		.968	.984		1.125	
71-146116-	-16-					1.000		1.0000-20 UNEF	.9675-.9616		1.078	1.108		1.219	
71-146118-	-18-					1.125		1.1875-18 NEF	1.1514-1.1450		1.203	1.233		1.312	
71-146120-	-20-	.399	.087	.147	1.635	1.250	.344	1.1875-18 NEF	1.1514-1.1450	1.105	1.328	1.358	.115	1.438	.215
71-146122-	-22-	.399	.087	.147	1.635	1.375	.344	1.4375-18 NEF	1.4014-1.3949	1.105	1.453	1.483	.115	1.562	
71-146124-	-24-	.399	.087	.147	1.697	1.500	.344	1.4375-18 NEF	1.4014-1.3949	1.105	1.567	1.610	.115	1.688	
71-146125/50						NOT AVAILABLE									

REL. NO.	WAS	DATE	D'MAN	APPD.
32508-147				
1	CNR	ADD: COL K & S; REV COL P; CHG PICT.	4-17-57	I.NILES
2	34105-15	N +.000 -0.005 DIA	5-28-58	MOORE
3	33624-602	ADD & REL SIZE 24 & DATA	7-28-58	D. WAY
4	35525-238	L +.030 -.020; REV KK DIA COL, SS DIA COL, S COL; STANDARDIZED	10-29-58	VIMISLIK
5	36162-8	TEST 9-3353-2 (PRO SPEC)	1-28-60	MARKOSKI
A1	45525-809	WAS .983 (COL SS, SIZE 14), 1.614 (COL SS, SIZE 24); (MFG)	5-5-66	BRADLEY
A2	51430-1	REM NOTE 9	4-20-70	BRADLEY
B	72028-49	(CL II) ADAPTER WAS 10-117911-XX3, REV. "L" COL.	2-4-81	LEWIS
C	A0785	(CL II) ADDED 10-252806/824(-)	12-20-06	JONES

ACCESSORIES
(NOT PART OF STANDARD ASSY)
SEE DRAWING
10-150000



71-146106 THRU
71-146150

- FOR CONTACT ARRANGEMENTS, SEE DRAWINGS L-15206(-) THRU L-15250(-).
- MATES WITH PLUG 71-146606/50 AND OTHERS.
- FOR COMPONENT PART NUMBERS OF DESIRED ARRANGEMENT, SEE APPLICABLE PARTS LIST.
- TO COMPLETE ASSY NO. & PT NO., ADD APPLICABLE INSERT ARRANGEMENT SUFFIX TO BASE NUMBERS LISTED ABOVE PER 9-2437-1.
- VERTICAL CENTERLINES OF INSERT ARRANGEMENT & THE MAIN SHELL POLARIZING KEYWAY TO BE WITHIN .005 OF INDICATED ROTATION PER 9-2437-1.
- SEE WORK ORDER FOR PERMISSIBLE ADDITIONAL OR ALTERNATE STAMPING.
- INSERTS AND CONTACTS MUST NOT BE REMOVED.
- STAMPING MAY BE ON EITHER SIDE OF FLANGE (ONE SIDE ONLY) OR ON N DIA AS SHOWN.
- DISTANCE BETWEEN END OF SHELL & THE POINT AT WHICH A GAGE PIN, HAVING THE SAME BASIC DIAMETER AS THE MATING CONTACT & A SQUARE FACE, ENGAGES SOCKET CONTACT SPRING.

MATERIAL SPEC.		PROCESS SPEC.	SCINTILLA MAGNETO DIVISION		TOLERANCES UNLESS OTHERWISE SPECIFIED	
		TEST 9-3980-2 ASSY	BENDIX AVIATION CORPORATION SIDNEY, N. Y., U.S.A.		FRACTIONS: 1/32 DECIMALS: ±.010 ANGLES: ±2° CONCENTRICITY: .015 FIR: BREAK SHARP EDGES: .010-.030 SQUARENESS: .010 PER INCH OF LENGTH MACHINED SURFACES: MUST BE FLAT AND PARALLEL WITHIN THE TOLERANCE OF THE APPLICABLE DIMENSION AND SMOOTH WITHIN 200 MICRO INCHES RMS.	
HEAT TREAT SPEC.		FINISH SPEC.	CONNECTOR, ELECTRICAL PLUG, TYPE PTA () FL. OLIVE DRAB		NEXT ASSEMBLY	
			NAME		WEIGHT - LBS. SEE PARTSLIST	
			D'MAN		SUPERSEDES	
			CHECKER		SUPERSEDED BY	
			MAT. P		AND IS NOT INTERCHANGEABLE	
			STDS		REF.	
			CH. D'MAN		71-146106 THRU 71-146150	
			APPROVED			
			SCALE			
			NONE			
TOOL ACC.		COM. REC. 2-25-57	1-11-57			

USE OF THIS DOCUMENT IS UNLIMITED. DOCUMENTS REFERENCED HEREON CONTAIN LIMITED RIGHTS DATA.