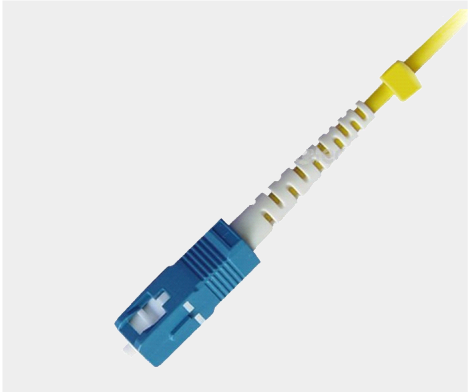


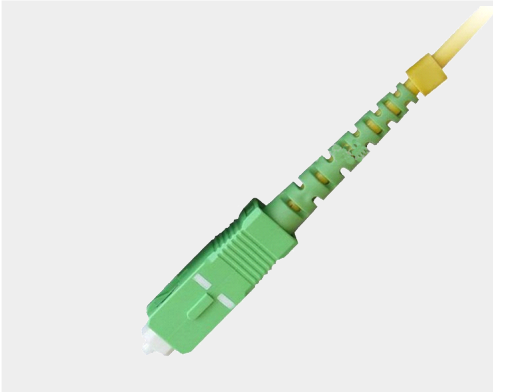
## SC Patch Cord Series



SC/PC-SM-SX patch cord



SC/PC-MM-SX patch cord



SC/APC-SM-SX patch cord



SC/PC-SM-DX patch cord



SC/PC-MM-DX patch cord



SC look bank fiber optic patch cord



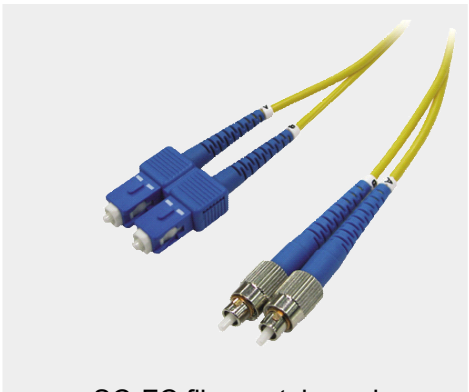
SC optic fiber patch cord



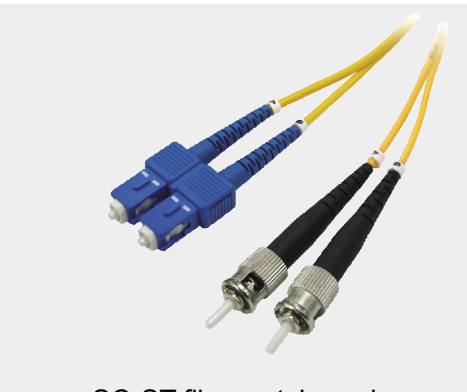
SC-SC fiber patch cord



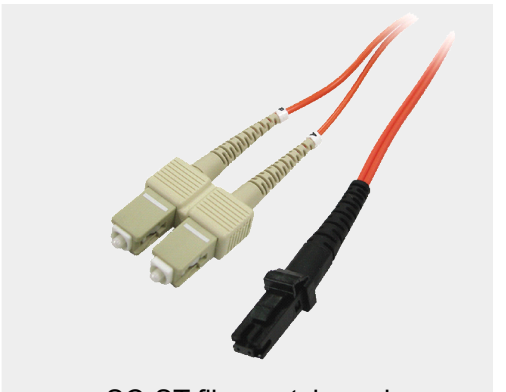
SC-LC fiber patch cord



SC-FC fiber patch cord



SC-ST fiber patch cord



SC-ST fiber patch cord

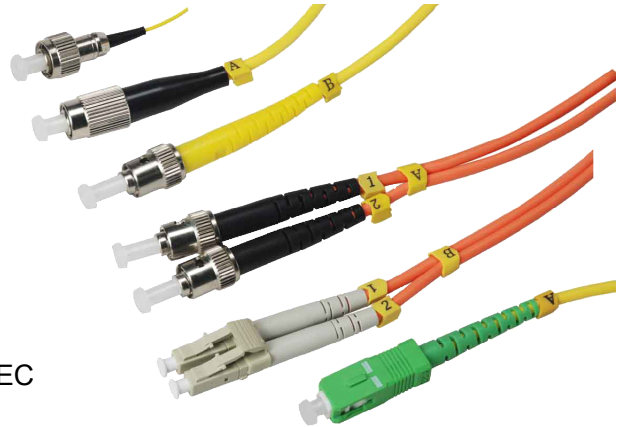
## SC Patch Cord Series

### DESCRIPTION

Fiber optic patch cords suited for equipment jumper cable, cross connects, and work area connections. All patch cords are manufactured using OFNR riser grade cable and are 100% factory tested to ensure performance to TIA/EIA-568-B-3 standards. ST/ST, SC/SC and hybrid ST/SC Patch Cords are available in both multimode (62.5/125µm and 50/125µm) and single mode cable-types, in duplex and simplex versions.

### FEATURES

- Good durability
- Good exchangeability
- High temperature stability
- Low insertion loss and back reflection loss
- Superior Quality Standard PC/UPC/APC Polishing
- Standard: Telcordia GR-326-CORE, TIA/EIA and IEC



### APPLICATION

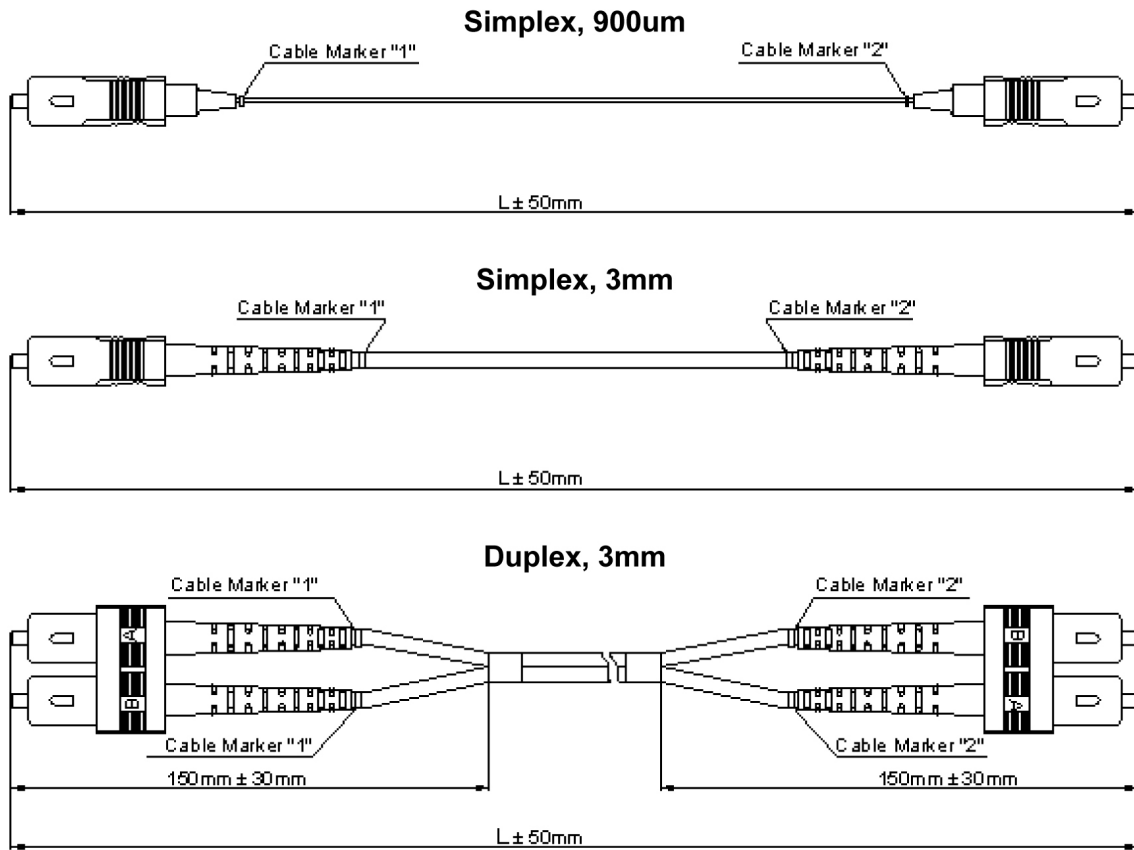
- Gigabit Ethernet
- Active device termination
- Telecommunication networks
- Video; Multimedia; CATV
- Premise installations
- Local area networks



### TECHINCAL SPECIFICATIONS

Descriptions	SM(PC)	SM(UPC)	SM(APC)	MM(PC)
Insertion loss	<0.3dB	≤0.2dB	<0.3dB	<0.3dB
Return loss	≥50dB	≥50dB	≥65dB	≥35dB
Repeatability	≤0.1	≤0.1	≤0.1	≤0.1
Durability	<0.1dB typical change, 1000 mating			
Interchangeability	≤0.2dB			
Vibration	≤0.2dB			
Operating Temperature	- 20°C ~ + 70°C			
Storage Temperature	- 40°C ~ + 80°C			
Cable Diameter	3.0mm, 2.0mm, 0.9mm			

## SC Patch Cord Series



## ORDER INFORMATION

XXX	—	SC	/	PC	—	SC	/	PC	/	SM	—	SX	/	2.0	—	3M
0		1		2		3		2		4		5		6		7
0	Brand name															
1	Connector#1 LC,SC,FC,ST,E2000,DIN,D4,MU,MTRJ,etc.															
2	Lapping Way PC&APC (For MTRJ, F=Female, M=Male)															
3	Connector#2 LC,SC,FC,ST,E2000,DIN,D4,MU,MTRJ,Pigtail,etc.															
4	Cable Type SM(9/125 $\mu\text{m}$ ) ,MM(50/125 $\mu\text{m}$ & 62.5/125 $\mu\text{m}$ )															
5	Fiber Number SX(Simplex) or DX(Duplex)															
6	Cable Diameter 2.0=Ø2.0mm, 3.0=Ø3.0mm, 0.9=Ø0.9mm, etc.															
7	Cable Length 3m(Length in meter)															