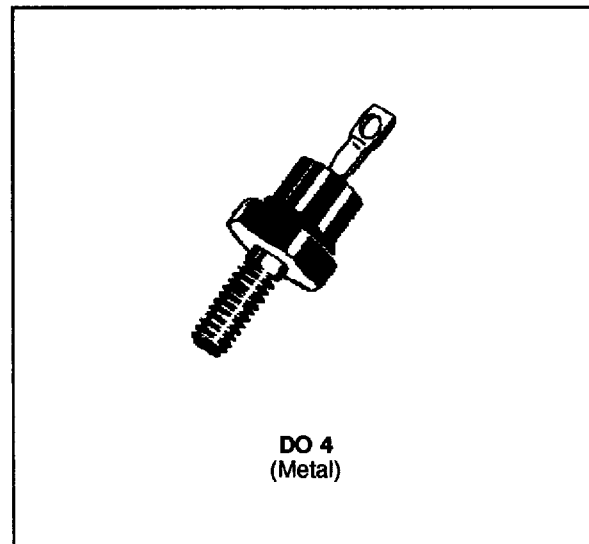


RECTIFIER DIODES

- STANDARD RECTIFIER
- HIGH SURGE CURRENT CAPABILITY
- LOW FORWARD VOLTAGE DROP



ABSOLUTE MAXIMUM RATINGS (limiting values)

Symbol	Parameter	Value	Unit
$I_F (AV)$	Average Forward Current* $T_C = 125^\circ\text{C}$	12	A
I_{FSM}	Surge non Repetitive Forward Current $t_p = 10\text{ms}$ Sinusoidal	230	A
P_{tot}	Power Dissipation* $T_C = 125^\circ\text{C}$	12.5	W
T_{stg} T_J	Storage and Junction Temperature Range	- 40 to + 150 - 40 to + 150	$^\circ\text{C}$

Symbol	Parameter	BYW 88-									Unit
		50	100	200	300	400	500	600	800	1000	
V_{RRM}	Repetitive Peak Reverse Voltage	50	100	200	300	400	500	600	800	1000	V

THERMAL RESISTANCE

Symbol	Parameter	Value	Unit
$R_{th (j-c)}$	Junction-case	2	$^\circ\text{C/W}$

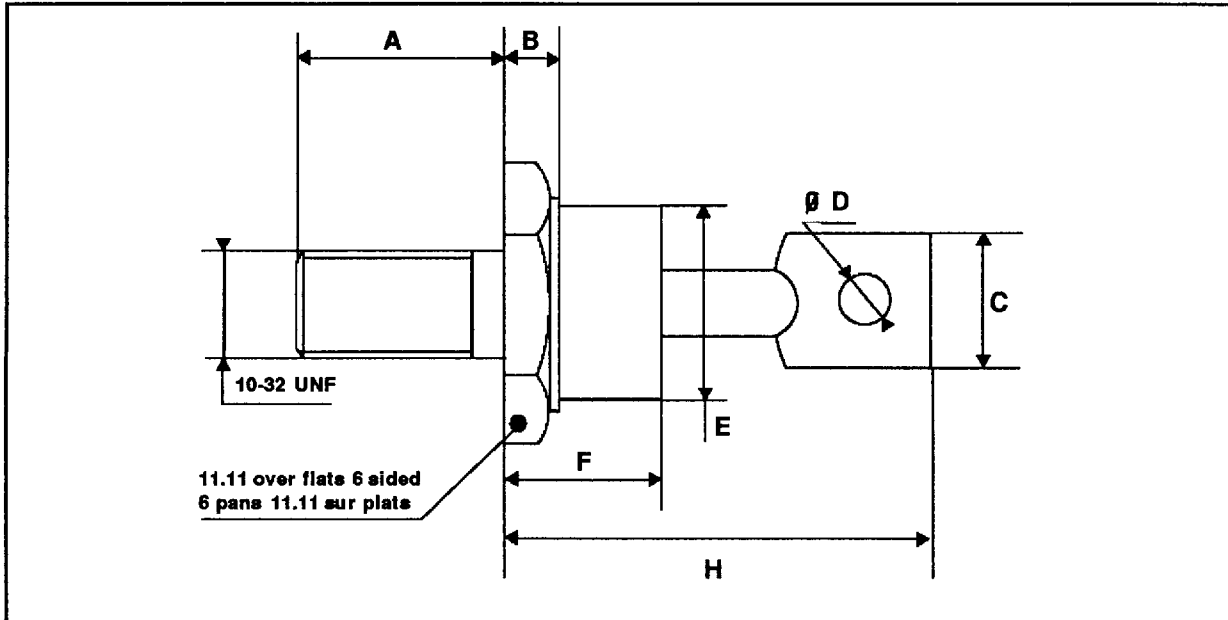
ELECTRICAL CHARACTERISTICS

Symbol	Test Conditions	Min.	Typ.	Max.	Unit
I_R	$T_J = 125^\circ\text{C}$ $V_R = V_{RRM}$			3	mA
V_F	$T_J = 25^\circ\text{C}$ $I_F = 35\text{A}$			1.25	V

* Single phase, half wave, resistive or inductive load

PACKAGE MECHANICAL DATA

DO 4 Metal



REF.	DIMENSIONS					
	Millimeters			Inches		
	Min.	Typ.	Max.	Min.	Typ.	Max.
A	10.72		11.50	0.422		0.453
B	2.00		4.40	0.079		0.0173
C			6.35			0.25
D	1.53			0.060		
E			10.76			0.424
F			10.28			0.405
H			20.32			0.800

Cooling method : by conduction (method C)
 Marking : Cathode connected to case : type number
 Anode connected to case : type number + suffix R (consult us for these reverse version datasheets)
 Weight : 5.1g
 Recommended torque value : 180cm. N
 Maximum torque value : 220cm. N

Information furnished is believed to be accurate and reliable. However, SGS-THOMSON Microelectronics assumes no responsibility for the consequences of use of such information nor for any infringement of patents or other rights of third parties which may result from its use. No license is granted by implication or otherwise under any patent or patent rights of SGS-THOMSON Microelectronics. Specifications mentioned in this publication are subject to change without notice. This publication supersedes and replaces all information previously supplied. SGS-THOMSON Microelectronics products are not authorized for use as critical components in life support devices or systems without express written approval of SGS-THOMSON Microelectronics.

© 1994 SGS-THOMSON Microelectronics - Printed in Italy - All rights reserved.

SGS-THOMSON Microelectronics GROUP OF COMPANIES

Australia - Brazil - France - Germany - Hong Kong - Italy - Japan - Korea - Malaysia - Malta - Morocco - The Netherlands
 Singapore - Spain - Sweden - Switzerland - Taiwan - United Kingdom - U.S.A.