

## SS-ZLPI-2KVA-Z

### INTEGRADOR SOLAR

1 Integrador Solar de 2KVA con 6 paneles solares MC4

Conectores para rápido conexión entre Paneles

6 paneles solares de 270W Policristalino

Batería incorporada del gel de 2 PC 12V 100AH,

Inversor incorporado de 2KW 120v / 60HZ.

Soporta red / generador como entrada de bypass para Carga,  
gestión inteligente de la batería y temperatura.

Función de compensación,

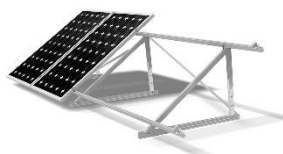
salida de salida de una sola fase,

potencia de salida de frecuencia: 1KW, IP20

Plug & Play, proceso de instalación

Con 2x5VdcUSB puerto de carga 12VD

Panel, conveniente para una rápida recarga y más eficiente.





# ZLPI Integrated Solar System (1-3KVA)

1000-3000 W



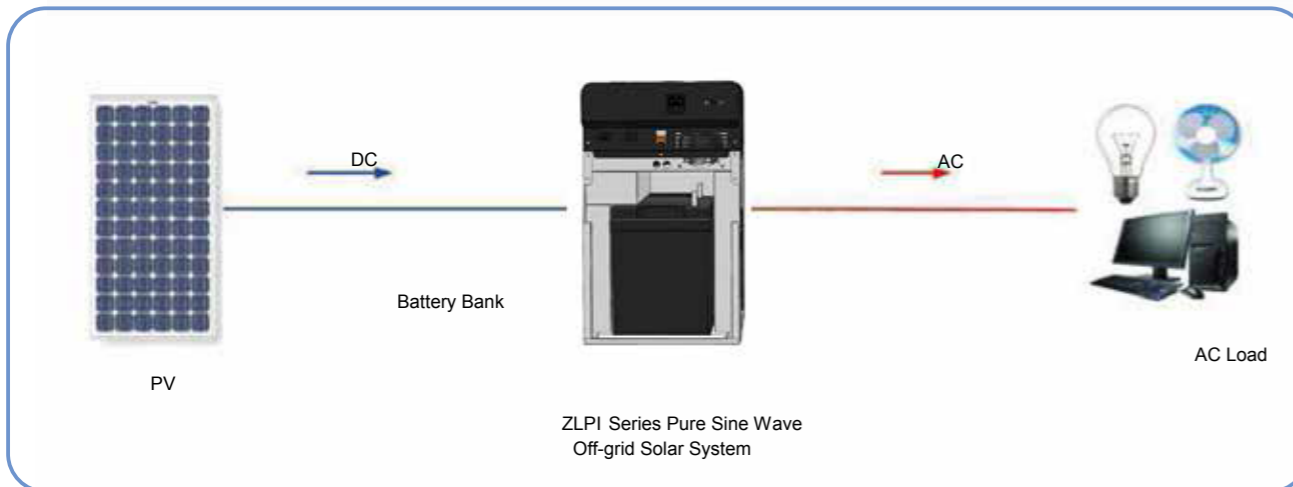
## ZLPI 1KLS / 2KLS / 3KLS

### Features

- MPPT controller, PV input range 15-85Vdc
- Integrated design with controller, inverter and battery box
- With isolation transformer, pure sine wave AC output
- Easy installation, plug-and-play
- Intelligent battery management, support bypass input
- Multiple protections: DC & AC over voltage, over current, over temperature, short circuit etc
- LCD smart display
- Reliable power supply, safety performance

### Description

ZLPI series pure sine wave off-grid solar system integrates MPPT controller, inverter and battery box together, easy installation and useful. The system inverts DC to AC and directly supplies for terminal load, solving the basic problem of electricity. Mostly applied for places without electricity or certain applications e.g. residential power supply, field work, travel sites, night market stalls, etc.



### Technical data

Model	ZLPI 1KLS	ZLPI 2KLS	ZLPI 3KLS
<b>Solar Controller</b>			
Max. PV input power (W)	240	480	1440
PV input voltage range (VDC)	15-85		
Max. charge current (A)	20		30
<b>Inverter</b>			
Rated Power (VA)	1000	2000	3000
Output voltage (Vac)	110/220/230/240±3%		
Output frequency (Hz)	50/60±3%		
Output wave type	Pure sine wave		
THDI	<5% (linear load)		
Power factor	0.7		
Under voltage protection value (VDC)	10.8	21.6	43.2
Crest factor	3		
Over load capacity	100~125% 10min; 125~150% 1min; 150~200% 10s		
<b>Battery</b>			
Battery type	Lead-acid battery		
Battery capacity	1*100AH/12V	2*100AH/12V	4*100AH/12V
Battery rated voltage (VDC)	12	24	48
Battery floating charge voltage (VDC)	14	28	56
<b>System</b>			
Display	LCD+LED		
Display content	PV indicator, battery capacity, AC voltage, load percentage		
Inverter protection	AC over voltage, AC short circuit, DC over voltage, DC under voltage, over temperature, etc		
Cooling method	Air cooling		
Communication interface	RS232 (optional)		
Operating temperature range (°C)	-20~+50 (>50°C derating)		
Relative humidity in operation	0~95% (non-condensing)		
Storage temperature range (°C)	-25~+70		
Max. operating altitude	3000 (>3000m derating)		
Noise emission [dB (A)]	<55 (at 1 meter)		
Efficiency	>85%		
Ingress Protection rating	IP20		
Dimension(W*H*D mm)			
Weight [with battery (kg)]	45	56	87

Data may change without any notice.



Jinko Solar Co., Ltd  
 NO.1 Jinko Road Shengren Economic Development Zone  
 Jiangxi Province 334100 China  
[www.jinkosolar.com](http://www.jinkosolar.com)

---

## PHOTOVOLTAIC MODULE

### Solar Module Type : JKM270PP-60

Maximum Power	(P <sub>max</sub> )	270W
Power Tolerance		0~+3%
Maximum Power Voltage	(V <sub>mp</sub> )	31.86V
Maximum Power Current	(I <sub>mp</sub> )	8.58A
Open Circuit Voltage	(V <sub>oc</sub> )	37.93V
Short Circuit Current	(I <sub>sc</sub> )	9.03A
Nominal Operating Cell Temp	(NOCT)	45±2°C
Maximum System Voltage		1000VDC
Maximum Series Fuse Rating		15A
Operating Temperature		-40°C~+85°C
Application Class		A
Fire Class		C
Weight		18.5(kg)
Dimension		1650x992x40(mm)
STC: 1000W/m <sup>2</sup> AM1.5, 25°C		

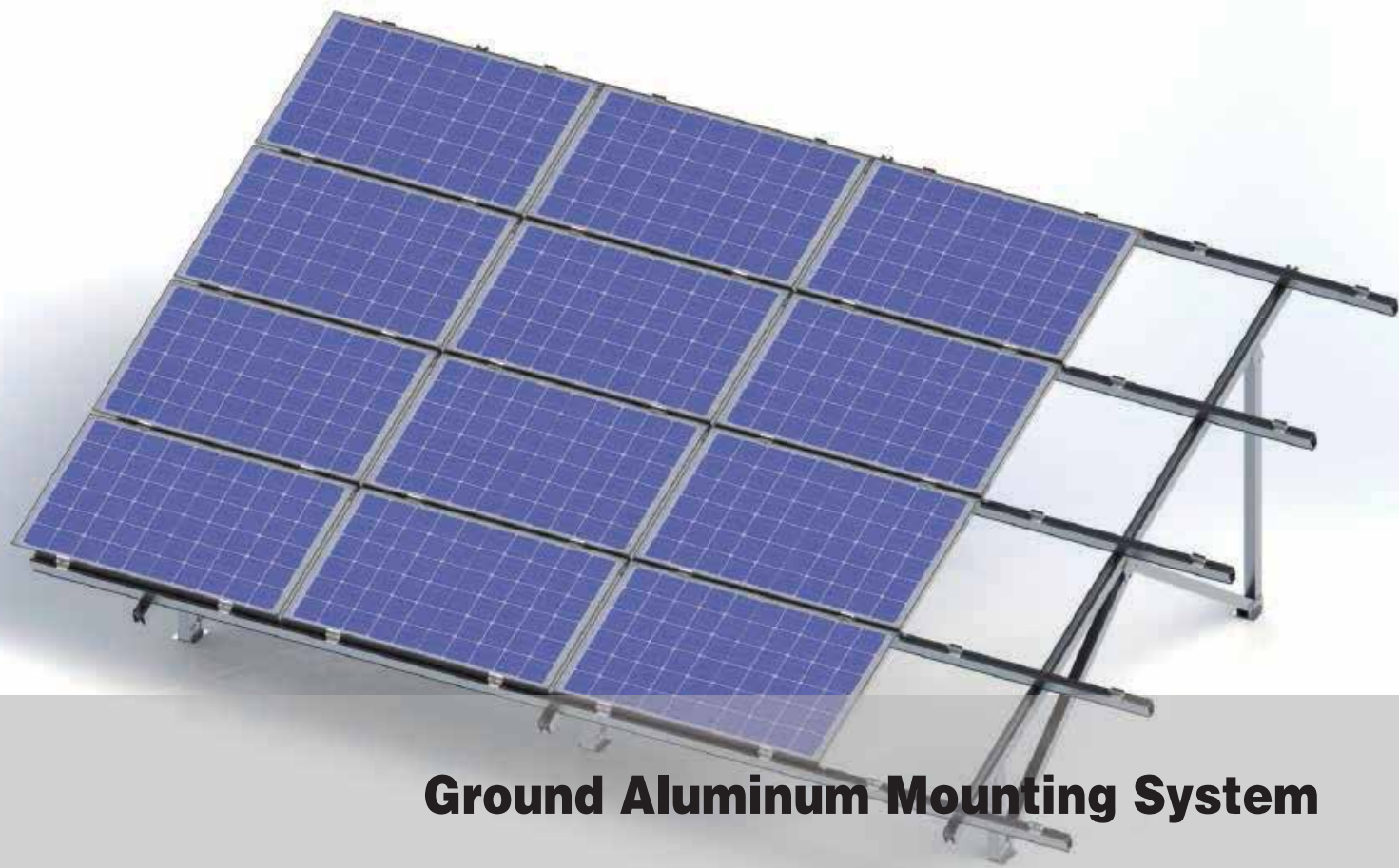
---

**WARNING**

**ONLY** qualified personnel should install or perform maintenance work on these modules  
**BE AWARE** of dangerous high DC voltage when connecting modules  
**DO NOT** damage or scratch the rear surface of the module

---

V9



# Ground Aluminum Mounting System

## Product Features

- ❖ **Fast Installation**  
Pre-assembly design, reduce site installation time with high efficiency.
- ❖ **Eco-friendly Aluminum Material**  
All of the aluminum steel could be recycled, no waste produced.
- ❖ **Excellent Quality**  
High quality ,AL 6005-T5 and SUS-304 are adopted as the main material.
- ❖ **Wide Range of Application**  
Applicable to complex terrain and all type of modules.

Installation site	Open Ground
Installation angle	On requirement
Module arrangement	Portrait or landscape
Module specification	Frame/ frameless Crystalline/ thin film
Module size	On requirement
Material	Anodized aluminum
Installation height	On requirement
Windproof	60m/s
Snow load	1.4KN/m2
Warranty time	10 years
International standard	ISO9001、 CE

## Bracket Foundation

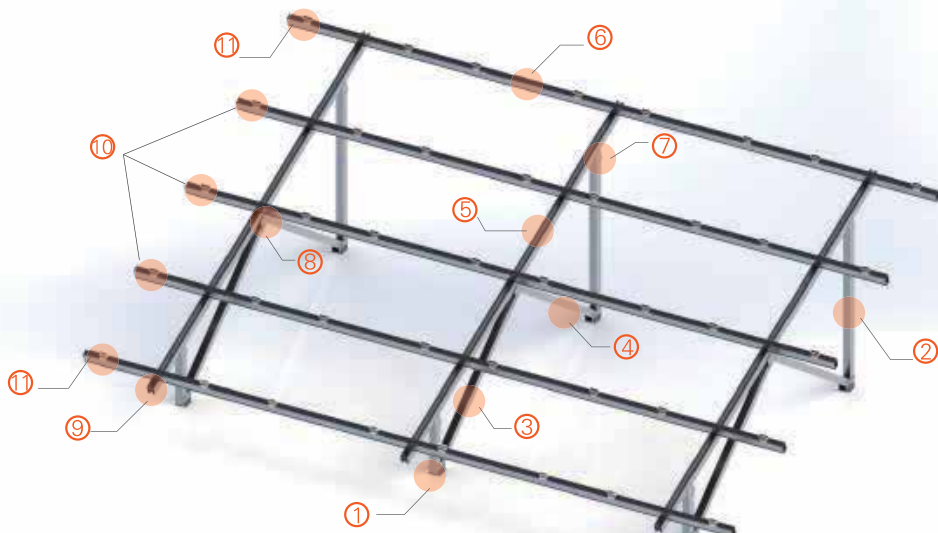


Concrete foundation



Screw pile

## Components



① Front Column	② Rear Column	③ Front Diagonal Bracing	④ Rear Diagonal Bracing
⑤ Beam	⑥ Rail	⑦ Connection	⑧ Connection
⑨ Connection	⑩ Mid Clamp	⑪ End Clamp	

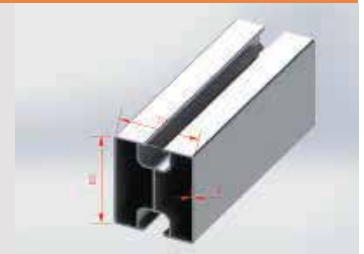
## Components



Column  
 Cross Profile: 70\*70mm  
 Material: AL6005-T5  
 Thickness of anodized films:  $\geq 12\mu\text{m}$



Rail  
 Cross Profile 90\*60mm  
 Material: AL6005-T5  
 Thickness of anodized films:  $\geq 12\mu\text{m}$



Beam  
 Section: 80\*70mm  
 Material: AL6005-T5  
 Thickness of anodized films:  $\geq 12\mu\text{m}$

## Type



W-Type



N-Type



A-Type



Enhanced Type